

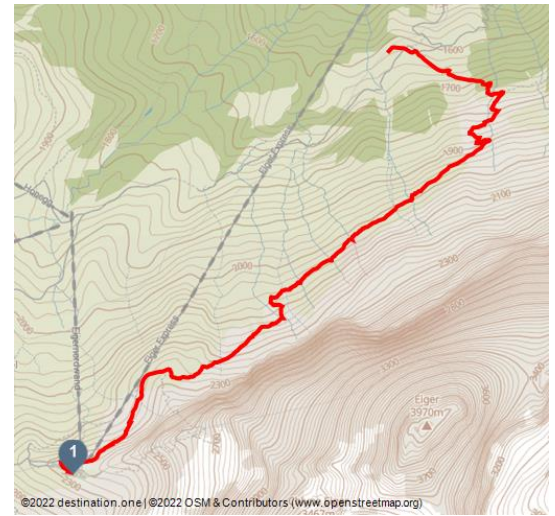


Eiger Trail Eigergletscher - Alpighen

Hiking Trail



Ann-Sofie Tant, Jungfrauabnen Management AG



Tour Dates:

↔ 6 km Distance	🕒 2 h 50 min Duration	⤴ 80 m Altitude	⤵ 783 m Altitude descending
↑ 2348 m Highest Point	↓ 1616 m Lowest Point		



Recommended Seasons:

JAN	FEB	MRZ	APR	MAI	JUN
JUL	AUG	SEP	OKT	NOV	DEZ

The lookout point above Eigergletscher station is where the Eiger Trail begins, which also makes the Eiger an adventure for hikers as it actually runs along the foot of the famous Eiger North Wall. You can thus get close to the scene of heroic Alpine deeds and dramas without having any climbing experience whatsoever. It offers a magnificent view of the wide valley basin of Grindelwald, as well as a sensational close-up impression of the (in)famous Eiger North Wall. In the area of Wart, a panel shows several of the most important climbing routes. The well-signposted trail runs mostly downhill and the wide scree slopes give way to lush pastures carpeted with Alpine flowers up to Alpighen station.

Ratings:

★★★★★ Panorama

Address:

3822 Lauterbrunnen

Organisation:

Jungfrauabnen Management AG
<https://www.jungfrau.ch/>



Scan QR-Code to save this page offline, share with friends and more.

<https://s.et4.de/n1rVc>



Startpoint:

Eigergletscher, Jungfraubahn middle station

Destinationpoint:

Alpiglen, Station der Wengernalpbahn

Directions:

Eigergletscher - Wart - Alpiglen

Equipent:

Normal hiking gear, hiking boots with good soles and walking sticks help with the descent.

Getting There:

Via Bern or Lucerne to Interlaken. Or from the south, via the Grimsel Pass (summer only) or the Simplon Pass and the Lötschberg car-transport train to Interlaken. Then follow the signs to Grindelwald or Lauterbrunnen.

Parking:

Lauterbrunnen

Lauterbrunnen multi-storey car park directly at the railway station or the uncovered car park by the church.

Grindelwald

There are three public car parks: Eiger+ multi-storey car park (252 spaces), Sports Centre multi-storey car park (160 spaces) and Grindelwald Terminal Parking (1,000 spaces). Alternatively, you can also use the car park at Grindelwald Grund.

Public Transit:

The Bernese Oberland Railway takes you from Interlaken Ost railway station to Lauterbrunnen, the Grindelwald Terminal or Grindelwald railway station. From the Grindelwald Terminal, the Eiger Express takes you directly to the Eigergletscher in just 15 minutes. Alternatively, from Lauterbrunnen or Grindelwald railway station you can change to the Wengernalp Railway and travel to Kleine Scheidegg. From there, take the Jungfrau Railway to the Eigergletscher railway station.

Additional Information:

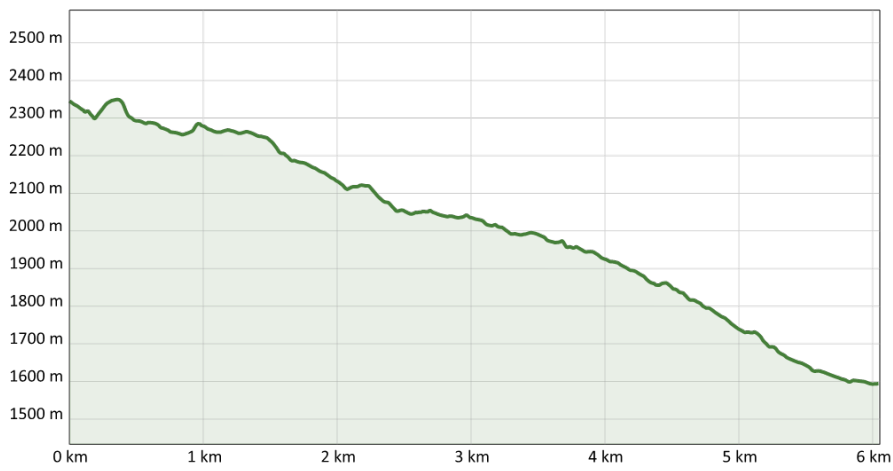
Hike 36

(in the printed summer panoramic map of the Jungfrau Railways)

Source: outdooractive.com

ID: oaTour_23429533

Last changed on 11.06.2024, 08:04



Ann-Sofie Tant, Jungfrauabahn Management AG

