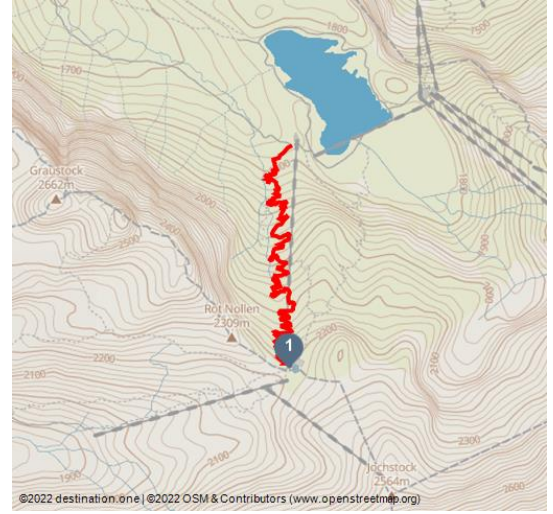




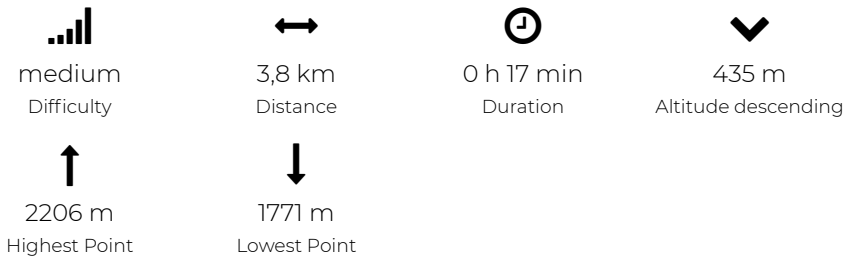
Jochpass Trail



Oskar Enander Photography, Engelberg-Titlis Tourismus AG



Tour Dates:



Recommended Seasons:

JAN	FEB	MRZ	APR	MAI	JUN
JUL	AUG	SEP	OKT	NOV	DEZ

The Jochpass Trail is a varied bike trail, which leads from the Jochpass to the Trübsee and is built so that experienced as well as less experienced bikers can have fun.

The Jochpass trail with lots of flow and some more difficult sections promises unlimited riding fun. From the Jochpass mountain station, the medium-difficult trail goes its way down for around 4.5 kilometers in the direction of Trübsee. You will master a total of 440 meters in downhill altitude. Curves, waves and jumps have been designed so that beginners and advanced riders alike can enjoy the trail. However, experience on a mountain bike is a prerequisite in any case. To get to the trailhead, there are two options. Either you decide for the comfortable variant and take the Titlis Xpress from Engelberg. Get off at the Trübsee mountain station and ride along the left shore of the lake to the Jochpass valley station. For the short section you need about 5 minutes. Or you can ride your bike from the valley station of the Titlis



Ratings:

★★★★☆ Panorama

Address:

6386 Wolfenschiessen

Author:

Engelberg - Titlis Tourismus

cable cars via Untertrübsee to Trübsee. From there, the chairlift will take you to the start of the trail.

Startpoint:

Jochpass

Destinationpoint:

Trübsee

Directions:

Jochpass-Trübsee

Equipent:

Engelberg's bike shops have a wide range of bikes and cycling accessories for sale or hire. It's also worth stopping by if your bike is in need of repairs or replacement parts.

Tip:

Only children with experience on bike trails and a solid technique should ride this trail.

Getting There:

If arriving by A2 (Basel-Gotthard) motorway, exit at Stans Süd, then follow the main road for 20 km to Engelberg. Engelberg is 30 minutes from Lucerne or 75 minutes from Basel, Zurich or Bern.

Parking:

Fee-paying car parks in Engelberg.

Public Transit:

National and international connections (from Zurich airport every half-an-hour with approx. 1h travel time) to Lucerne. Then by Zentralbahn train in 43 minutes through a varied landscape and gorges up to Engelberg.

Additional Information:

- Trail Rules
- Bike shops
- Bike schools and Guiding
- Bike hotels
- Bike friendly companies
- Bike transport

More information: www.luzern.com | shop.luzern.com

Organisation:

Engelberg-Titlis Tourismus
<http://www.engelberg.ch/>



Scan QR-Code to save this page offline, share with friends and more.

<https://s.et4.de/Z31vf>

- Bike wash

