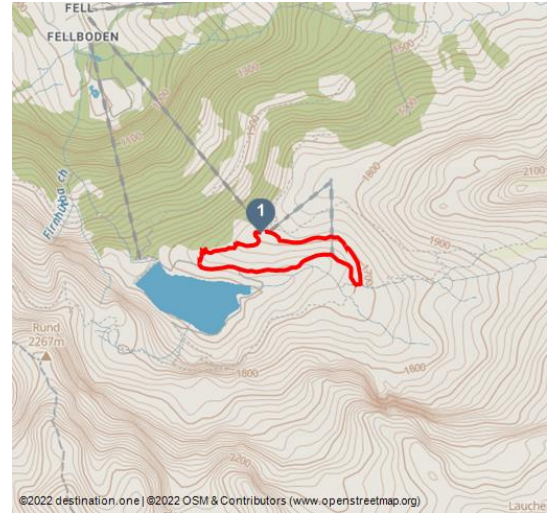




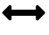





## Snowshoe Trail Bannalp



Engelberg - Titlis Tourismus, Engelberg-Titlis Tourismus



### Tour Dates:

			
2,6 km Distance	0 h 55 min Duration	94 m Altitude	92 m Altitude descending
			
1718 m Highest Point	1624 m Lowest Point		

### Recommended Seasons:

JAN	FEB	MRZ	APR	MAI	JUN
JUL	AUG	SEP	OKT	NOV	DEZ

**The Bannalp is a secret gem in the Engelberg Valley. The circular snowshoe trail offers a wonderful backdrop.**

The journey up to the small Bannalp wintersports area begins in Oberrickenbach in the lower part of the Engelberg Valley. The «s'blaiä Bähnli» gondola will take you to the starting point of the circular snowshoe hike, which is an easy walk for anyone of average fitness. At the mountain station of the Fell-Chrüzhütte Bannalp cableway you will immediately notice the jagged profile of Bannalp's famous landmark, the Bietstock. With your back to the prominent peak, you follow the snowshoe trail slightly downhill through the snowy woods to the Bannalp reservoir. Before you loom the peaks of Gross Walenstock and Klein Walenstock, towering majestically over the alpine meadow.



### Address:

6386 Wolfenschiessen

### Author:

Engelberg - Titlis Tourismus

### Organisation:

Engelberg-Titlis Tourismus  
<http://www.engelberg.ch/>

Looking down, you will see the frozen lake, covered in snow. This reservoir has provided the canton of Nidwalden with hydroelectricity since the 1930s. Next, you pass through sparse conifer woodland, with the Bannalp stream on your right, and the path climbs steadily but gently upwards to the Urnerstaffel mountain inn. Here, cold feet and hands can be thawed over a cup of hot tea before returning to the starting point via open terrain.



Scan QR-Code to save this page offline, share with friends and more.

[https://s.et4.de/y9P\\_d](https://s.et4.de/y9P_d)

### **Startpoint:**

Bannalp mountain station

### **Destinationpoint:**

Bannalp mountain station

### **Directions:**

Das Gebiet Wolfenschiessen - Bannalp erreichen Sie in ca. 15-20 min. per Auto oder mit dem öffentlichen Verkehr ab Engelberg oder ab Stans.

### **Safety Guidelines:**

Please walk along the marked and secured snowshoe paths. The user is responsible for the proposed routes. If you are planning a different route, please refer to the avalanche bulletin, maps and weather forecast.

### **Equipent:**

Snowshoes can be hired directly at the valley station. You must bring your own winter clothing, sturdy shoes and sun protection.

### **Tip:**

Enjoy snowshoeing by moonlight with raclette fun in the mountain guesthouse Urnerstaffel.

### **Getting There:**

The Wolfenschiessen - Bannalp area can be reached in approx. 15-20 min. by car from Engelberg or from Stans.

### **Parking:**

Parking is possible at the Bannalp valley station.

### **Public Transit:**

The Wolfenschiessen - Bannalp area can be reached in approx. 15-20 minutes by public transport from Engelberg or Stans.

### **Additional Information:**

Map

Prices

