

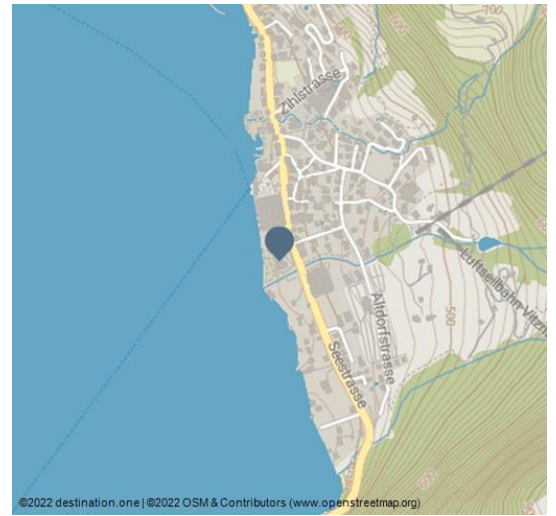


Hotel Vitznauerhof

Hotel



1 - © swisshotel



The hotel has 53 modern rooms and suites, offering the highest standards of comfort and peace in which to unwind and relax. The light-flooded rooms are modern, bright and full of natural light. Each room is decorated in an elegant colour scheme. The highlight of each room is the wonderful view to the lake or the mountains. We also offer culinary delights to match the magnificent backdrop. Our kitchen team will spoil you with fresh, local products, prepared and served with the greatest attention to detail, which promises to be a feast for all senses! At Vitznauerhof we offer you a range of culinary delights: in our fish and speciality restaurant, in the restaurant Inspiration, the garden panorama restaurant or BARIolé. For your well-being, our spa team is here for you. We offer a variety of massages as well as cosmetic and body treatments.

Address:

Seestrasse 80
6354 Vitznau

☎ 413997777

🏠 www.vitznauerhof.ch/

✉ info@vitznauerhof.ch



Scan QR-Code to save this page offline,
share with friends and more.

<https://s.et4.de/C38Qf>

PriceInfo

Rooms may be rebooked or cancelled without charge up until 3 pm two days prior to arrival. This gives us the opportunity to re-let the room, thereby saving you the costs. In the event of a rebooking, no-show or cancellation after the set deadline or in the event of a premature departure we reserve the right to charge one to three nights, depending on the length of stay. Should the hotelier incur any losses due to a failure on the part of the guest to honour his obligations (late cancellation, no-show, late arrival, early departure), the guest will be held liable in accordance with the relevant provisions of the Swiss Code of Obligations (OR 97ff and OR 264 respectively).

Source: destination.one

ID: h_58933

Last changed on 05.07.2024, 11:34

Booking provider:



Booking

<https://s.et4.de/B38Qf>

Arrival

By car:

Arriving from Zürich, follow the A4 towards Zug-Lucerne and then the A4 Schwyz/Gotthard. Take the exit for Küsnacht/ Weggis and follow the signage to Vitznau.

Arriving from Beckenried, you have the option to take the car ferry to Gersau. (only during summer)

By train:

It is also possible to arrive at the train station Schwyz or Küsnacht. With pleasure we will organize a pick-up service for you. Please let us know in advance.

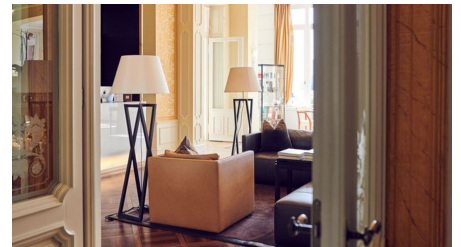
Another possibility is to arrive by boat via Lucerne. Our porter will gladly welcome you at the boat station in Vitznau.

By boat:

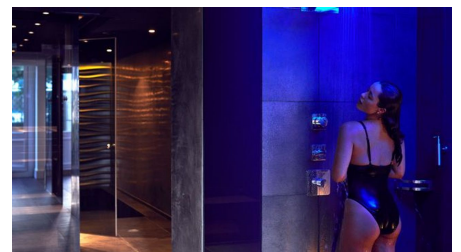
Our pier is located right in front of the hotel. Please note that we cannot reserve a space prior to arrival.



1 - © swisshotel



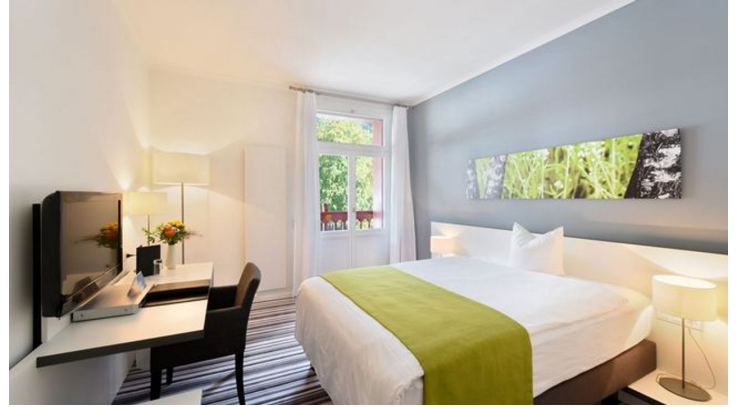
2 - © swisshotel



3 - © swisshotel



4 - © swisshotel



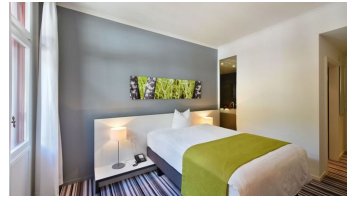
6 - © swisshotel



6 - © swisshotel



6 - © swisshotel



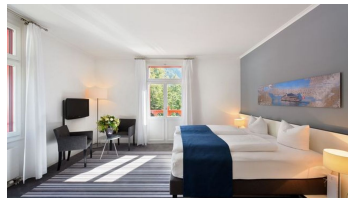
6 - © swisshotel



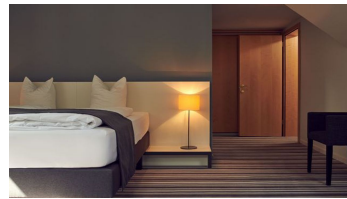
6 - © swisshotel



6 - © swisshotel



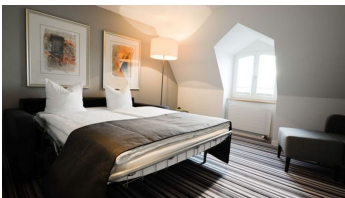
6 - © swisshotel



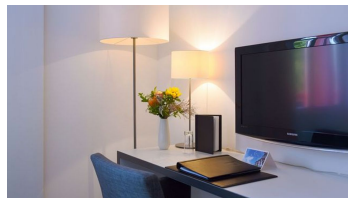
6 - © swisshotel



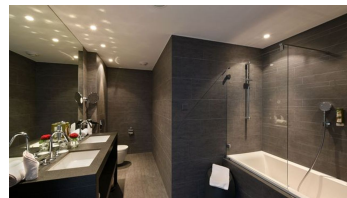
6 - © swisshotel



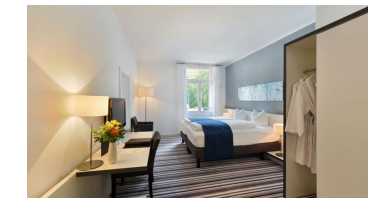
6 - © swisshotel



6 - © swisshotel



6 - © swisshotel



6 - © swisshotel