

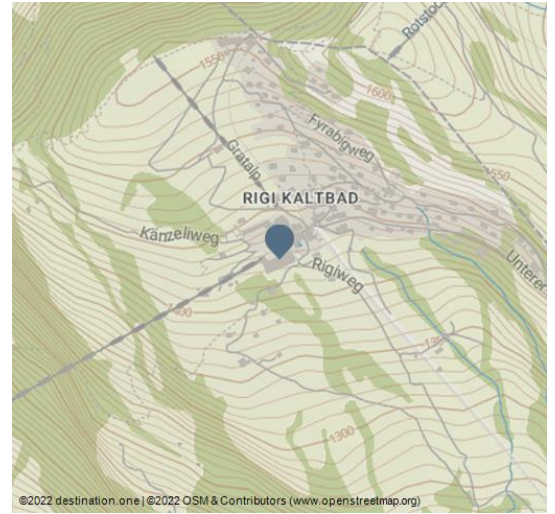


Rigi terrace apartment with spectacular views

Flat




Die ausgedehnte Terrasse verwöhnt Sie mit einem spektakulären Panoramablick auf den Vierwaldstättersee und die Berge. - © swisshotel



This apartment invites you to dream. The spacious 2.5 room apartment (64 m²) is located in the house "Rigi Résidence" in a central location in close proximity to the village center and the mineral bath. The aerial cable car station to Weggis and the Vitznau-Rigi Kulm cog railway station are practically on the doorstep. Despite the central location, the apartment offers you rest and privacy. A solid beech parquet underlines the high quality character of the apartment. The open kitchen is equipped with modern V-Zug devices. The two bathrooms offer a high standard with beautiful materials, one bathroom is equipped with a bathtub, the other with a walk-in shower and integrated washing tower (washing machine / dryer) and a Geberit shower toilet. The heart of the apartment is the terrace (33 m²). Exceptionally large and with an impressive view, it is the absolute highlight. The Rigi is free of cars and can only be reached by the cable car takes from Weggis in 10 minutes or by the train in 18 minutes. From the mountain station of the cable car you have direct access to the building in which the apartment is located. The shops in Rigi Kaltbad are in the immediate vicinity. The shops in Weggis and Vitznau are only a few minutes' walk from the valley station. There is also a well-developed network of public transport with ideal connections (ship to Lucerne, bus with train connection in Küssnacht) to The Valley stations in Weggis or Vitznau. The Küssnacht am Rigi motorway connection is approx. 15 minutes away. Please note, that Rigi-Kaltbad is up in the mountains and cannot be reached by car, a train or cable car needs to be taken. If you are looking for tranquility this is the perfect place.

Address:

Rigiweg 2
 6356 Rigi Kaltbad

 <http://luzern.holidaybooking.ch/ferienwohnung/2792175/>



Scan QR-Code to save this page offline, share with friends and more.

<https://s.et4.de/618Qf>

Source: destination.one

ID: h_58785

Last changed on 05.07.2024, 11:44

Booking provider:



Booking

<https://s.et4.de/Q58Nf>



Vom Wohn-/Essbereich und der Küche geniessen Sie eine fantastische Weitsicht. - © swisshotel



Eine grosse, wandfüllende Fensterfront lässt viel Sonnenlicht in das freundliche Wohnzimmer mit der offenen Küche. - © swisshotel



Die Küche ist mit modernen V-Zug Geräten ausgestattet und befindet sich in tadellosem Zustand. - © swisshotel



Das helle Schlafzimmer mit Arbeitsecke lädt nicht nur zum Schlafen ein. - © swisshotel



Im edlen Badezimmer befindet sich die Waschmaschine und der Trockner. - © swisshotel

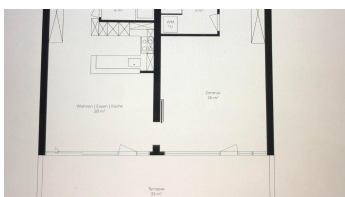
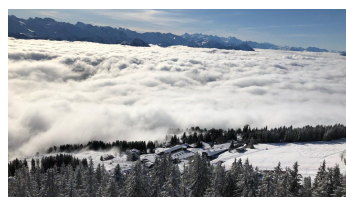


Bild 7 - © swisshotel



Kaltdbad vom Rotstock, Geniessen Sie die
Sonne auch in kalten Jahreszeiten über dem
Nebelmeer auf ca. 1500 m ü. M. - © swisshotel

Wandern in landschaftlich atemberaubender
Lage direkt über dem Vierwaldstättersee,
umgeben von Wäldern und Almen. - © swisshotel

Ausblick vom Zen Zentrum Felsentor.
Ein Kraftort für eine Zeit der Stille, des
Rückzuges und der Meditation. - © swisshotel