



Sergei Rachmaninoff and the Villa Senar

Places of interest

Historic buildings

Concert Hall



Sergei Rachmaninoff Weggis - © Rachmaninoff Stiftung



The Villa Senar is a home for artists of all generations and disciplines.

Villa Senar is the former home of Sergei Rachmaninoff, one of the greatest composers, conductors and pianists of the 20th century. A magical place with around 21,000 square metres of parkland, including a gardener's house and its own boathouse,

Rachmaninoff's Villa Senar is situated in a beautiful location directly on Lake Lucerne. He built the picturesque villa in the 1930s. The world-famous artist and his beloved wife Natalya spent formative years in the area around the Lucerne Riviera, composing key works such as the Paganini Variations, the 3rd Piano Concerto and the Corelli Variations.

"Senar" is an acronym made up of the couple's names: Sergei + Natalya Rachmaninoff. Over the years, this building has gained artistic, architectural and cultural significance. Sergei Rachmaninoff's original concert grand piano also stands in his studio and lends the property a special aura.

For Sergei Rachmaninoff and his family, this was a place to recharge their batteries, to arrive and a place of encounter and inspiration with the arts. It is a place where Lucerne's architectural, cultural and musical history comes together and is told.

Visit to Villa Senar

The property and its buildings have been owned by the Canton of Lucerne since April 2022. Together with the Serge Rachmaninoff Foundation, the Canton of Lucerne aims to develop the site into a cultural and educational centre with regional and international appeal, make it accessible to the public and preserve Rachmaninoff's cultural heritage. A wide variety of events and concerts will enchant visitors. Be inspired, as Sergei Rachmaninoff once was, by the unique setting between Lake Lucerne and the mountains of Central Switzerland. Immerse yourself in the life of a renowned artist, Hollywood star and family man.

Villa Senar can only be visited on public occasions or on request and, unlike museums, does not have regular opening hours.

The Serge Rachmaninoff Foundation coordinates the cultural events. The programme & tickets are available on the website.

Address:

Zinnenstrasse 6
 6353 Weggis

+41 78 606 00 49

www.rachmaninoff.ch/



Scan QR-Code to save this page offline, share with friends and more.

<https://s.et4.de/Y28Qf>

Source: destination.one

ID: p_100197323

Last changed on 05.07.2024, 22:15

Public park & small terrace café

The Villa Senar is surrounded by two hectares of parkland with old and diverse trees and wide green spaces. The park is open on certain days during the warm seasons and, weather permitting, at weekends and on public holidays. When it is open, a small selection of drinks and food is offered.

Whether the park is open will be announced the day before on the website www.villa-senar.lu.ch announced.

Journey

Villa Senar and the park are not open continuously. Current information is provided on the websites www.villa-senar.lu.ch and www.rachmaninoff.ch published.

Please note that you can only arrive by public transport or on foot. There are no parking spaces available in the immediate vicinity. The property is located on the traffic-calmed Hertenstein peninsula.

Arrival by boat

Boat station Hertenstein. From the Hertenstein boat station, it is a 15-minute walk to Villa Senar (follow the signs to Stella Matutina).

Lido bus

At times, it is also possible to arrive and depart by Lido bus: Timetable

Features:

Suitability General

for every weather

Target group

Individual guests, Groups, Adults

Openinghours

Villa Senar can only be visited on public occasions or on request and, unlike museums, does not have regular opening hours.



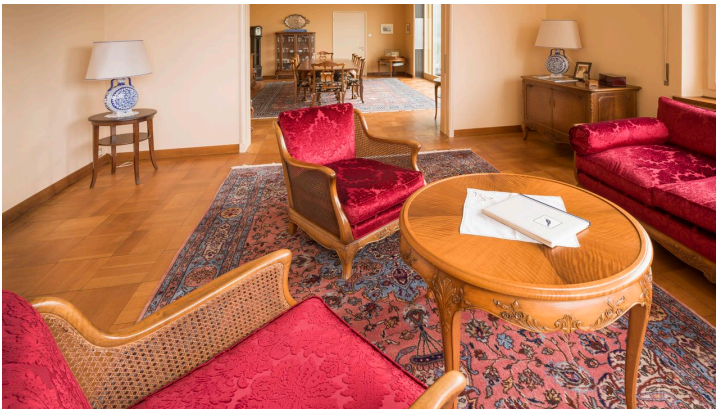
Rachmaninoff Villa Senar Weggis - © Denkmalpflege Kanton Luzern, Priska Ketterer



Rachmaninoff Villa Senar Weggis - © Denkmalpflege Kanton Luzern, Priska Ketterer



Rachmaninoff Villa Senar Weggis - © Denkmalpflege Kanton Luzern, Priska Ketterer



Rachmaninoff Villa Senar Weggis - © Denkmalpflege Kanton Luzern | Priska Ketterer