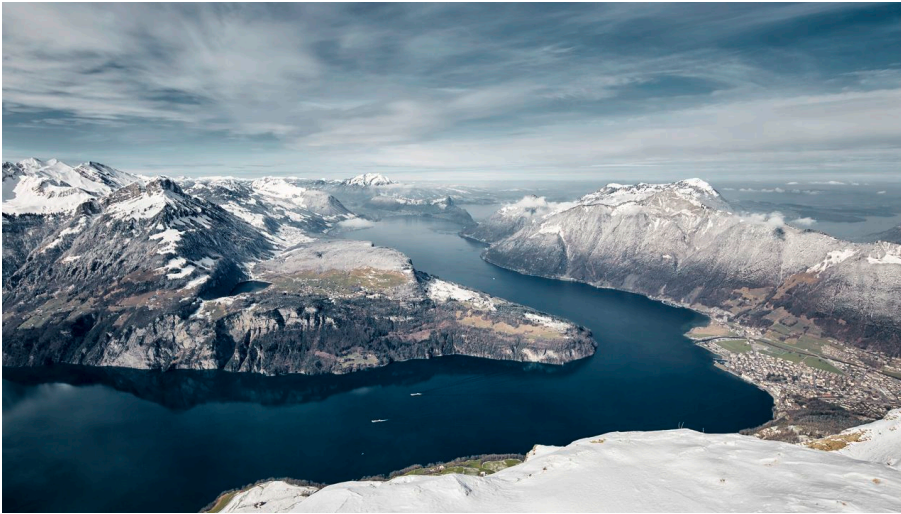


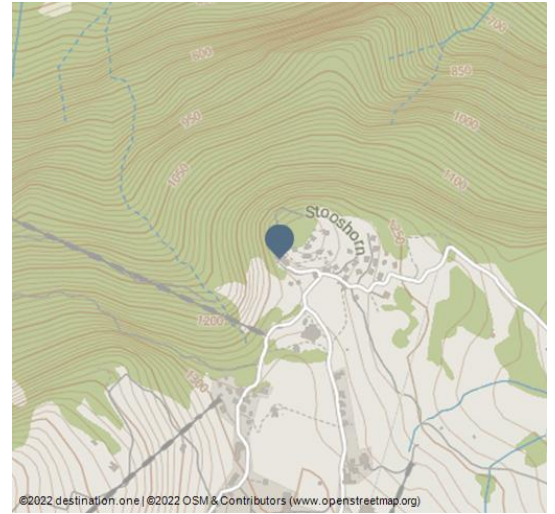


Stoos - Fronalpstock

Mountain summits



Stoos-Fronalpstock Winter - © Luzern Tourismus, Beat Brechbühl



The car-free mountain village of Stoos is a particularly good place to relax. Without traffic noise and hustle and bustle. Countless activities await you and your family in both summer and winter.

The world's steepest funicular railway from Schwyz-Schlattli or the aerial cableway from Morschach take you to the village of Stoos.

The ultimate summit experience can be found on the Fronalpstock.

The Schwyz-Stoos funicular railway was put into operation at the end of 2017 and is a technical marvel and a world record. Thanks to the automatic levelling of the cabins, you won't even notice that the cable car is travelling up a 110% gradient.

The wide range of mountain sports on offer with hiking and adventure trails as well as fun at Stoos-Seeli means you'll never be bored. In winter, the 35 kilometres of groomed pistes around the Fronalpstock and Klingenstock offer winter hiking trails and cross-country ski trails, a freestyle park and routes for sledging and airboarding.

Fronalpstock

The chairlift takes you up to the Fronalpstock, 1,922 metres above sea level. High above Lake Lucerne, a first-class idyll awaits you: the view of ten lakes and the mountains of Central Switzerland from the Fronalpstock is not to be missed. The restaurant offers regional specialities on the large panoramic terrace or in the rustic dining room. On the Fronalpstock, be impressed by the countless mountain peaks as well as the Rütli, the origin of Switzerland, which is located on the opposite side.

Ridge hiking trail

If you want to experience the full panorama, hike along the popular ridge hiking trail from the Klingenstock to the Fronalpstock. The Schwyz mountains, the peaks of Uri and the Glarus peaks vie for your attention. The ridge trail lives up to its name: Lake Lucerne lies vertically below on the left, while the view to the right drops down into the Muota Valley.

Address:

Stoosplatz 1
 6433 Stoos SZ

+41 (0)41 818 08 08

<https://www.stoos.ch/>

info@stoos.ch



Scan QR-Code to save this page offline,
 share with friends and more.

<https://s.et4.de/lpfRf>

Source: destination.one

ID: p_100199640

Last changed on 05.07.2024, 22:15

For this hike (difficulty level T3), good shoes with a non-slip sole, hiking equipment, sure-footedness and a good level of fitness are highly recommended. The hiking trail is secured with chains from around June to October.

Features:

Accessibility / Location

Accessible by public transport

Target group

Individual guests, Groups, School classes, Families

Booking provider:



<https://s.et4.de/6D6Kf>



Stoos-Fronalpstock winter skiing - © Luzern Tourismus, Beat Brechbühl



Schwyz Stoos funicular railway - © Stoosbahnen AG, Ivan Steiner