

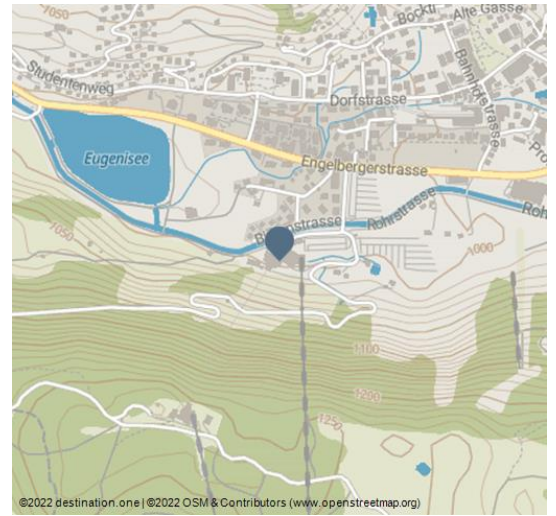


Titlis

Mountain summits



Titlis Rotair - © Roger Grütter



The summit of the Titlis lies at 3'020 metres above sea level - high enough for there to be snow even in summer.

From Engelberg, take the 8-seater Titlis Xpress gondola lift through the Trübsee middle station and on to Stand station. The first revolving Titlis Rotair cable car then takes you from Stand station up to the summit at an altitude of 3'020 metres. The journey from Engelberg to Titlis takes around 30 minutes.

Glacier fun

Be impressed by the mass of ice and discover the beautiful ice sculptures in the glacier grotto. If you feel like it, grab an inflated rubber ring and race down the piste. The ride on the Ice Flyer is more comfortable - you can glide over the glacier sitting comfortably in the chairlift.

Titlis Cliff Walk

Europe's highest suspension bridge requires courage and a sense of adventure. You will be rewarded with a breathtaking view of the icy depths. A moment for eternity.

Features:

Target group

Individual guests, Groups, School classes, Families

Address:

Poststrasse 3
6391 Engelberg

+41 41 639 50 50

www.titlis.ch/

titlis@titlis.ch



Scan QR-Code to save this page offline,
share with friends and more.

<https://s.et4.de/xG8Qf>

Source: destination.one

ID: p_100199955

Last changed on 05.07.2024, 22:15

Booking provider:



https://s.et4.de/8w_0d



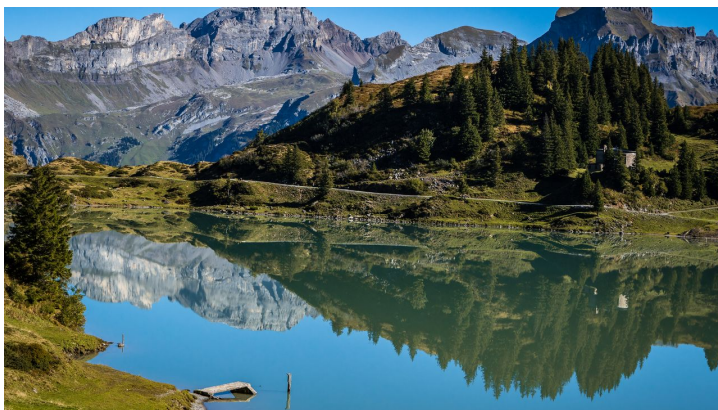
Titlis Cliff Walk - © Oscar Enander



Titlis Engelberg Skiing - © Schweiz Tourismus, Ruedi Flück



Titlis Glacier Grotto - © Roger Gruetter



Trübsee Titlis Engelberg - © outsideisfree.ch



Titlis Cliff Walk - © Luzern Tourismus, Oscar Enander