

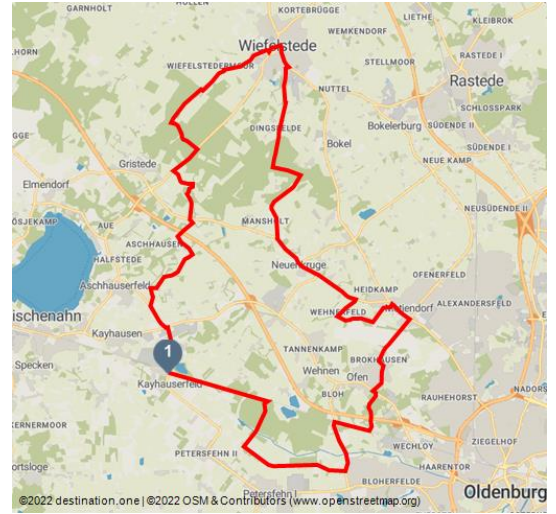


# Wold und Woldsee

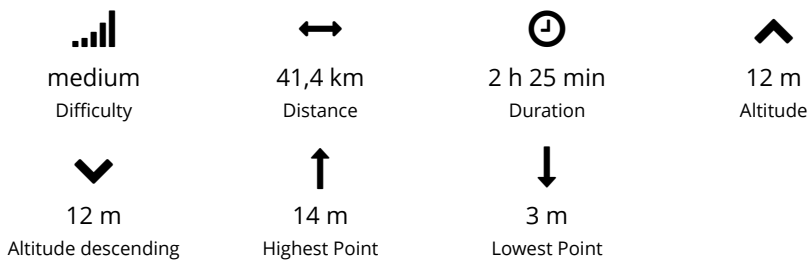
Bicycle Ride



Ammerland Touristik, Ostfriesland Tourismus



## Tour Dates:



## Recommended Seasons:

JAN	FEB	MRZ	APR	MAI	JUN
JUL	AUG	SEP	OKT	NOV	DEZ

## From Mansholter Holz to Wold through beautiful pastureland

This route is less suitable for fans of asphalt farm roads. For forest lovers who also like to cycle on unpaved roads with a water-bound ceiling, however, it is the ideal tour. With the Mansholter Holz and the Wold, bordering the Woldsee, cyclists cross two forest areas that are larger by Ammerland standards. The Woldsee, which was created when sand was extracted for the A 28 motorway in the early 1970s, is ideal for a break.

### Highlights RIGHT AND LEFT OF THE ROUTE

Mansholter Holz (Mansholt): The 175-hectare nature reserve consists of well-developed, species-rich alder, ash and moist to wet oak-hornbeam forests interlocking with swamps, various large sedge meadows and small meadowsweet high herbaceous meadows in the Bäketalern of the Nutteler and Bokeler Bäke. The Woldsee was created in the 1970s when sand was needed to build Autobahn 28. At the deepest points, the approximately 14 hectare lake is 13 meters deep.



## Ratings:

- ★★☆☆☆ Kondition
- ★★☆☆☆ Erlebnisqualität
- ★★★★★ Panorama

## Author:

Ammerland Touristik

## Organisation:

Ostfriesland Tourismus  
<https://www.ostfriesland.travel/>

Rhododendron Park Bruns (Gristede): Under the protection of tall pines, more than 1000 rhododendron and free-range azaleas are presented in many species and varieties in the Rhododendron Park in Gristede. Garden lovers will experience magnificent flowers, lush growth and, with some varieties, great fragrances. The park was open to the public from day one and quickly became a place of pilgrimage for rhododendron fans from all over the world.

The Evangelical Lutheran St. John's Church in Wiefelstede in the Ammerland district goes back to the oldest church building in the Ammerland. The construction of the church began around 1200 and changed steadily until the 15th century. The church contains remarkable pieces of equipment from medieval and baroque times.



Scan QR-Code to save this page offline, share with friends and more.

<https://s.et4.de/NJNcf>

Source: outdooractive.com

ID: F96D589554FF7689EDEF919FA7E31635

Last changed on 23.01.2024, 09:20

### Startpoint:

Wiefelstede

### Destinationpoint:

wiefelstede

### Directions:

The entire Wold & Woldsee tour is marked with an ocher symbol. The tour is signposted in both directions and cyclists can ride the tour in both directions and combine it with other tours. In addition, the intermediate signposts of the cycle traffic system indicate the direction on the way. The exact route description can be found on the GPX track.

### Safety Guidelines:

Long sections of the "Wold & Woldsee" tour lead over partly unpaved forest paths (Mansholter Büsche, Wold).

### Equipent:

No special equipment is required. A repair and breakdown kit can be carried for safety.

### Tip:

Corner shop (Neuenkrüge) - the shop was founded in 1912 and deliberately preserves the tradition of village life. You can also stop here in "Omas Stube" and enjoy coffee or tea with cake and biscuits.

### Getting There:

A28 / A29 / A31

You arrive by car along the A1 and A 29 autobahns to Oldenburg and from Oldenburg on along the A 28 towards Emden / Leer to Westerstede.

### Parking:

You will find public and free parking spaces at many start and finish points.

### Public Transit:

You can travel comfortably by train at the following train stations in Ammerland and the region.

Railway stations: Leer, Augustfehn, Westerstede-Ocholt, Bad Zwischenahn, Oldenburg, Rastede

You can easily reach the other places and districts by bus.

### Maps:

The tour directory & overview map "Discover the cycling landscape" can be ordered free of charge:  
Ammerland tourism

Ammerlandallee 12

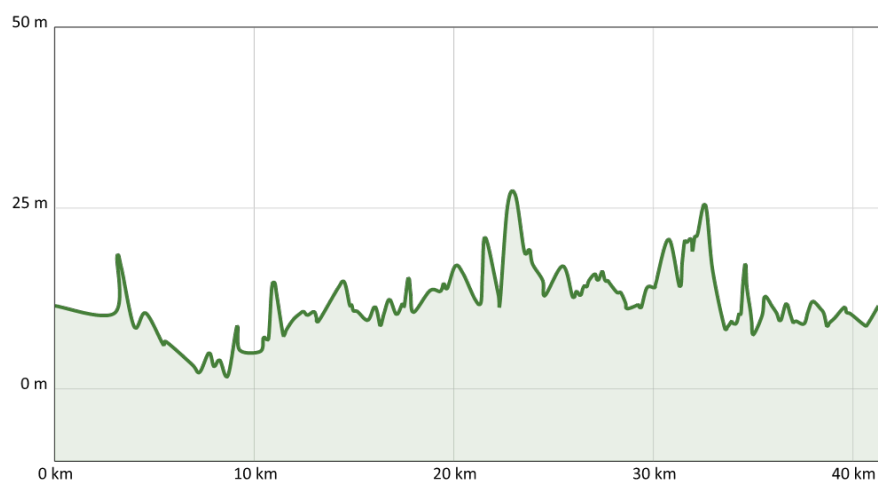
26655 Westerstede

Tel .: +49 (0) 4488 56 30 00

atis@ammerland.de

www.ammerland-touristik.de

**Only available in German**

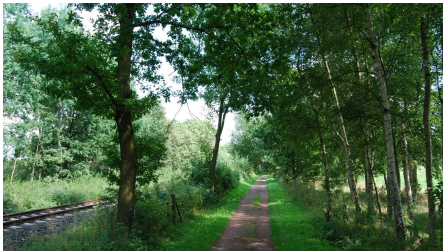




Ammerland Touristik, Ostfriesland Tourismus



Ammerland Touristik, Ostfriesland Tourismus



Wold&Woldsee - Streckenabschnitt - © Ammerland Touristik, Ostfriesland Tourismus



Ammerland Touristik, Ostfriesland Tourismus



Kirche in Wiefelstede - © Ammerland Touristik, Ostfriesland Tourismus



Ammerland Touristik, Ostfriesland Tourismus



Ammerland Touristik, Ostfriesland Tourismus



Wold&Woldsee - Streckenabschnitt - © Ammerland Touristik, Ostfriesland Tourismus



Wold&Woldsee - Streckenabschnitt - © Ammerland Touristik, Ostfriesland Tourismus

