



Althoff Grandhotel Schloss Bensberg

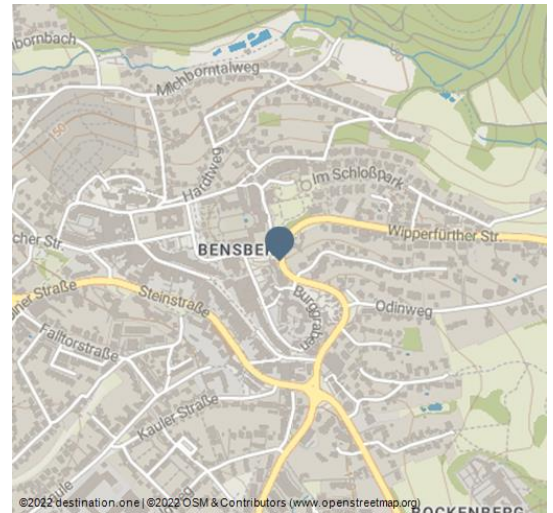
Conference hotel in the surrounding area

Conference hotel at the countryside

Conference hotel



Aussenansicht Althoff Grandhotel Schloss Bensberg - © Althoff Grandhotel Schloss Bensberg - schmidt@althoffhotels.com



Features:

Information on sustainability

Food & Beverage, Vegan dishes, Vegetarian dishes, Seasonal and regional products, BIO food, Sustainable supply chain, Waste management system, Cooling concepts in the kitchen, LED lamps, Reduction of electrical appliances in the rooms, Use of ecological cleaning agents, Avoidance of plastic packaging, Rental of bicycles/eBikes, Public transport tickets available, E-charging station, Awareness and commitment, Training for employees, Social commitment, Support for sustainability projects, Company health management, CO2 compensation through investment in climate protection projects, Certifications & Code

Type of event

Corporate Event, Christmas Party, Workshop & Seminar, Networking Event, Dinner Event, Hybrid Event, Green Meeting, Conference & Meeting, Teambuilding & Incentive

Catering & Gastronomy

restaurant, outdoor catering, bar

Overview:

Number of rooms	111
Number of double rooms	77
Number of accessible rooms	2
Total number of meeting rooms	9
Number of people in the largest room	300

Next station

KVB Bahn Linie 1

Contact Person:

Ms. Miriam Laura Heitmann
Althoff Grandhotel Schloss Bensberg

☎ 0049 2204 42 930

✉ heitmann@schlossbensberg.com

Address:

Kadettenstrasse
51429 Bergisch Gladbach

☎ 0049 2204 42 0

🏠 www.schlossbensberg.com/

Author:

Cologne Convention Bureau
convention@koelIntourismus.de

Organisation:

Cologne Convention Bureau
convention@koelIntourismus.de



Scan QR-Code to save this page offline,
share with friends and more.

<https://s.et4.de/n-Zzf>

Venue Introduction

Enjoy one of Germany's largest baroque castles in the Cologne Countryside - just a few minutes' drive from Cologne.

Venue Description

77 hotel rooms and 34 suites combine the baroque style of the historic hunting lodge with timeless, modern elegance - a combination for which the Althoff Grandhotel Schloss Bensberg received the Interior Design Award in 2016. Rooms await you with every imaginable amenity, from Wi-Fi and minibar to international TV channels and a coffee capsule machine, all available free of charge.

Enjoy award-winning culinary delights in four different variations. Gourmets will be delighted by modern menus of New German Cuisine at the 2-star Restaurant Vendôme, headed by Joachim Wissler. In the Trattoria Enoteca, appreciated by wine connoisseurs, the best of Italy is put on the plate. At the Champagne Brunch in the Restaurant Jan Wellem, you can indulge in a variety of delicacies every Sunday and the modern-classic Salvador Dalí Bar will surprise you with top-class art, creative drinks and delicacies from the castle kitchen.

A unique wellness concept awaits you in the "4 elements spa by Althoff". Inspired by the traditional teachings of the four elements, everything here revolves around wholeness and the harmony of body and soul. Relax in the pool and sauna area on over 1,000 m².

Whether it's a business event, a family celebration or a wedding: we will take care of your event with a lot of experience, individuality and competence right from the start. Your very special occasion deserves a special attention to detail, for which the Althoff Grandhotel Schloss Bensberg is renowned. In our prestigious castle rooms you can celebrate extraordinary events in an extraordinary setting.

Cologne Countryside

The Bensberg subway station is a 3-minute walk away. From there, the journey by direct train to Cologne city center takes only 30 minutes. Koelnmesse can be reached after a 20-minute drive.

Venue Awards

Green Sign Level 4

Venue catering & gastronomy

We promise world-class culinary delights in three different variations. In the two-star Vendôme restaurant, gourmets will be delighted by Joachim Wissler's modern menu. The restaurant is one of the best in the world and Germany's number one restaurant. In the Trattoria Enoteca, which is appreciated by wine connoisseurs, the best from Italy is served on the plate and the Sunday champagne brunch in the Jan Wellem restaurant invites you to enjoy a delicious feast on the most relaxed day of the week. The modern, classic Salvador Dalí Bar will surprise you with its innovative concept "New fashioned food & open wines" and invite you to a relaxed evening.

Distance from the main station

16 km

Distance to the university hospital

24 km

Distance university

22 km

Airport distance

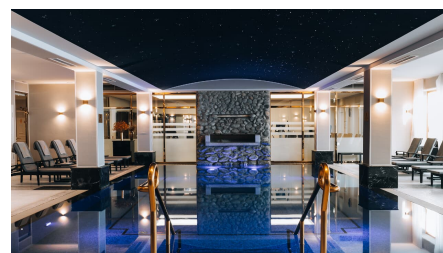
13 km



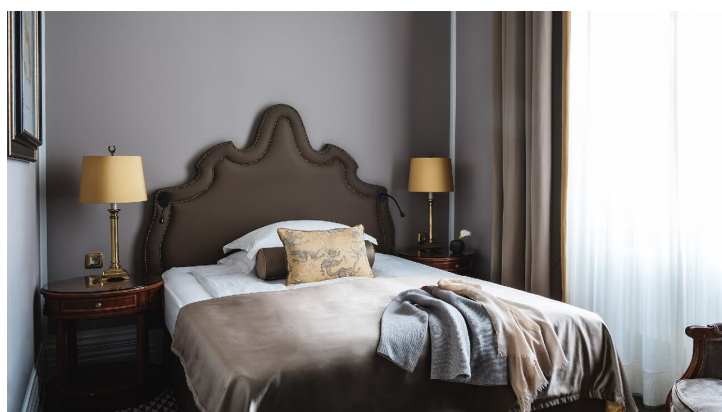
Ballsaal Althoff Grandhotel Schloss Bensberg - © (c) Wolfgang Stahr - info@schlossbensberg.com



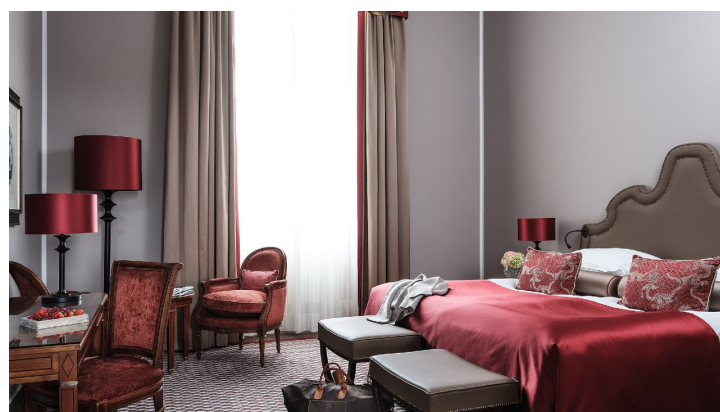
Dom Suite - © ©Jannis Hagels - hagels@althoffhotels.com



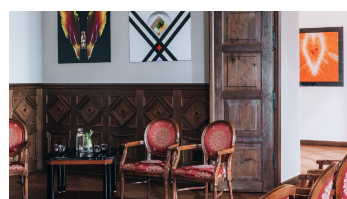
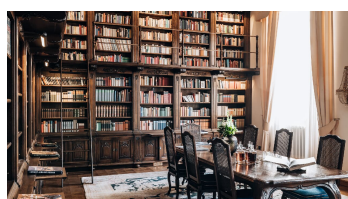
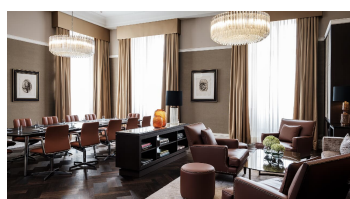
Four Elements SPA - © Jannis Hagels - hagels@althoffhotels.com



Grand Lit Zimmer - © (c) Wolfgang Stahr - info@schlossbensberg.com



Grand Superior Zimmer - © (c) Wolfgang Stahr - schmidt@althoffhotels.com



Business Lounge - © (c) Wolfgang Stahr - info@schlossbensberg.com

Bibliothek - © Jannis Hagels - info@schlossbensberg.com Salon Alberti - © Jannis Hagels - info@schlossbensberg.com

Salon Medici - © (c) Wolfgang Stahr - info@schlossbensberg.com



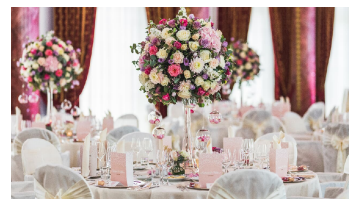
Aussenansicht - © Althoff Grandhotel Schloss Bensberg - info@schlossbensberg.com



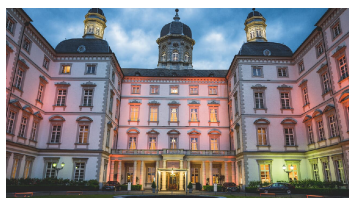
Ballsaal Hochzeit - © manuel thome photography, Althoff Grandhotel Schloss Bensberg - info@schlossbensberg.com



Salon Medici festlich - © manuel thome photography, Althoff Grandhotel Schloss Bensberg - info@schlossbensberg.com



Schloss Bensberg festlich - © manuel thome photography, Althoff Grandhotel Schloss Bensberg - info@schlossbensberg.com



Schloss Bensberg - © manuel thome photography, Althoff Grandhotel Schloss Bensberg - info@schlossbensberg.com