



# Gürzenich Köln - Koelncongress GmbH

Barrier-free venue

Historical Venue

Convention Centers

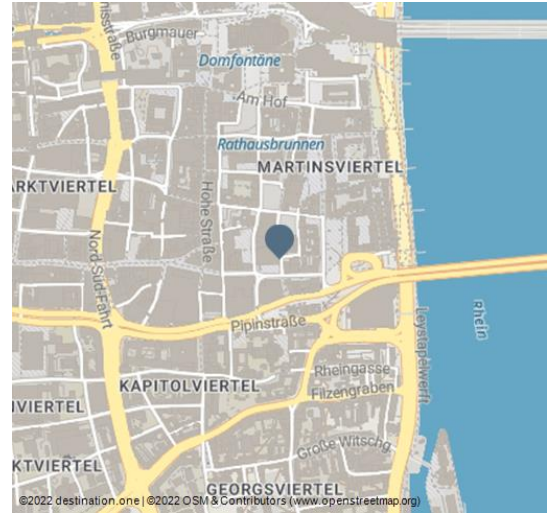
Convention Centres

Event locations

Event Hall



Gürzenich Köln, Außenansicht - © Koelncongress GmbH



## Features:

### Information on sustainability

Food & Beverage, Vegan dishes, Vegetarian dishes, Seasonal and regional products, Cooling concepts in the kitchen, First in first out-principle, LED lamps

### Type of event

Corporate Event, Christmas Party, Workshop & Seminar, Networking Event, Dinner Event, Congress & Exhibition, Hybrid Event, Conference & Meeting, Teambuilding & Incentive

### Conference venue award

Fairpflichtet

## Overview:

Total number of meeting rooms	4
Number of people in the largest room	1101

## Next station

Köln Hauptbahnhof

## Venue Introduction

Gürzenich Köln - historic, prestigious event centre in the heart of Cologne.

## Venue Description

Are you looking for a historic and stylish ambience for your event?

Then the Gürzenich Köln is just right for you. The Gürzenich - "Cologne's parlour" - with its late Gothic façade was built in 1447 and completely renovated in 1997. The interior was designed in the style of the 1950s, combining historical

## Contact Person:

Ms. Silke Hoffmann

✉ [sales@koelncongress.de](mailto:sales@koelncongress.de)

## Address:

Martinstraße 29-37  
50667 Köln

☎ +49 221 821-3080

🏠 <https://koelncongress.de/en/locations/guerzenich-koeln/>

## Author:

Cologne Convention Bureau  
[convention@koelntourismus.de](mailto:convention@koelntourismus.de)

## Organisation:

Cologne Convention Bureau  
[convention@koelntourismus.de](mailto:convention@koelntourismus.de)



Scan QR-Code to save this page offline, share with friends and more.

<https://s.et4.de/J0Zzf>

Source: destination.one

ID: h\_73028

Last changed on 25.04.2024, 09:11

architectural styles while keeping up with the times. Today, the imposing building in the heart of the city serves as a prestigious event centre for national and international congresses, conferences, concerts, balls and upscale social events.

The Gürzenich can accommodate up to 3,000 people in six characteristic halls and conference rooms of different sizes as well as two spacious foyers for congresses, conferences, concerts and social events.

Modern event technology and professional catering will make your event an all-round success for you and your guests.

The Gürzenich Köln is centrally located in Cologne's old town and is very easy to reach by public transport as well as by car.

### Venue Awards

Sustainability is an attitude for the company: economic activity consistently in balance with social and ecological challenges.

This is expressed in a holistic sustainability concept that defines, prioritises and sets the framework for key topics in line with the United Nations Sustainable Development Goals.

### Venue catering & gastronomy

FOR EVERY TASTE - FOR EVERY EVENT.

The way to the heart is through the stomach. And so does the success of any event. The catering expertise of Koelncongress Gastronomie GmbH ensures this - culinary delights to match the event: from product presentations and festive ceremonies to glittering balls. Traditional and exclusive: We serve you delicacies from the local cuisine prepared according to classic recipes - perhaps it could be creative finger food or a high-quality flying dinner?

### Distance from the main station

Cologne Central Station is 850 metres away from Gürzenich Köln and can therefore be reached on foot in approx. 12 minutes.

### Airport distance

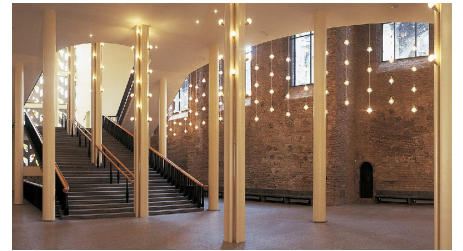
Cologne Bonn Airport is around 14 km away and can be reached by car in 16 minutes. The S-Bahn line S19 runs every 20 minutes from Cologne Central Station to the airport terminal at Cologne Bonn Airport. The journey takes around 14 minutes.



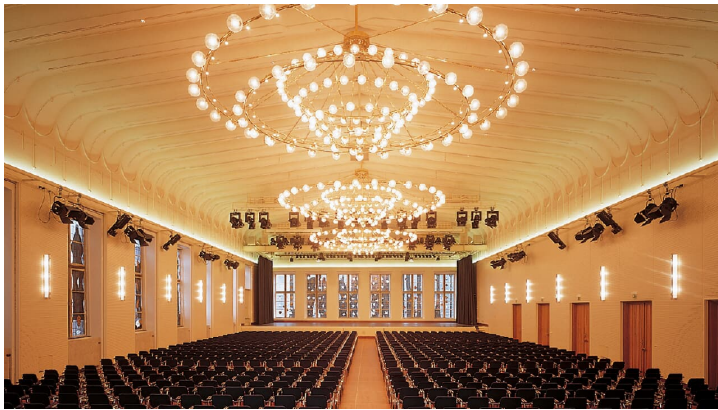
Gürzenich Köln, Außenansicht - © Koelncongress GmbH



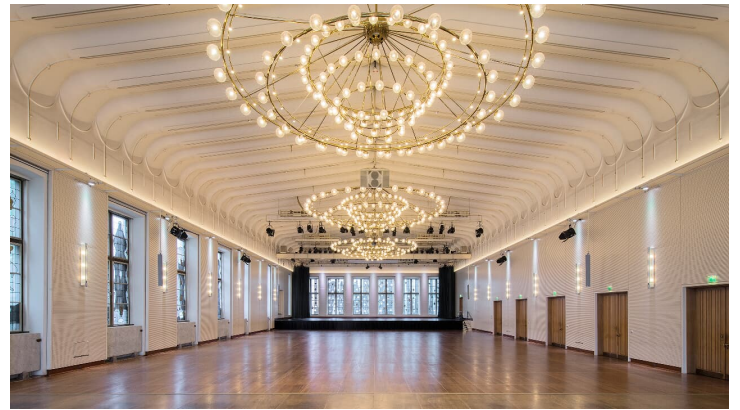
Gürzenich Köln, Erdgeschoss-Foyer - © Koelncongress GmbH



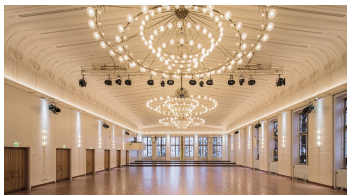
Gürzenich Köln, Erdgeschoss-Foyer - © Koelncongress GmbH



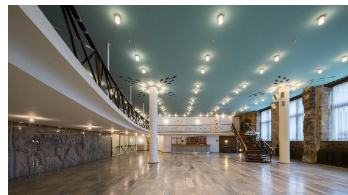
Gürzenich Köln, Großer Saal, Reihenbestuhlung - © Koelncongress GmbH



Gürzenich Köln, Großer Saal - © Koelncongress GmbH



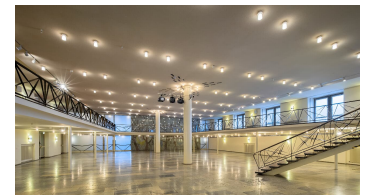
Gürzenich Köln, Großer Saal - © Koelncongress GmbH



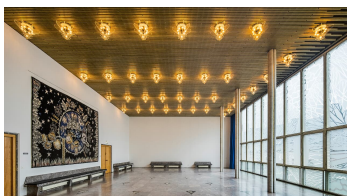
Gürzenich Köln, Marsiliussaal - © Koelncongress GmbH



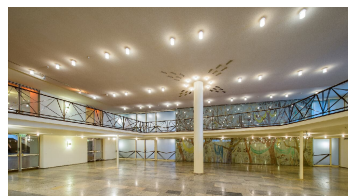
Gürzenich Köln, Marsiliussaal - © Koelncongress GmbH



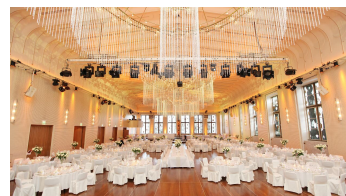
Gürzenich Köln, Kleiner Saal - © Koelncongress GmbH



Gürzenich Köln, Isabellensaal - © Koelncongress GmbH



Gürzenich Köln, Kleiner Saal - © Koelncongress GmbH



Gürzenich Köln, Großer Saal - © Koelncongress GmbH