

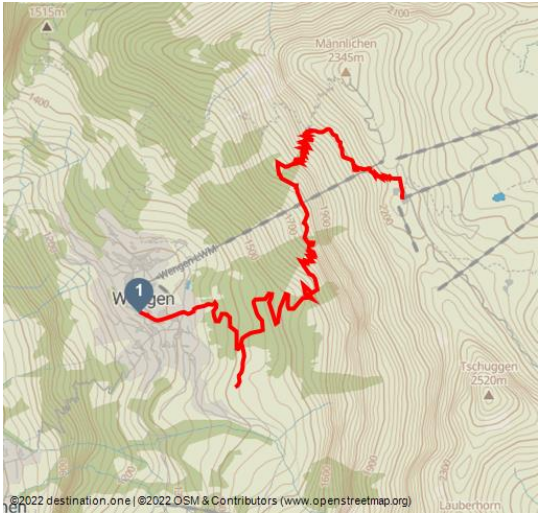


## Wengen - In Gassen - Männlichen

Hiking Trail



Jungfraubahnen Management AG



### Tour Dates:

↔

6 km

Distance

⌚

2 h 40 min

Duration

⬆

950 m

Altitude

⬆

2224 m

Highest Point

⬇

1275 m

Lowest Point



### Recommended Seasons:

JAN	FEB	MRZ	APR	MAI	JUN
JUL	AUG	SEP	OKT	NOV	DEZ

In Wengen you cross the centre of the village by following the Dorfstrasse. Hiking on an easy path you soon reach the last chalets of this mountain village and the spot called «In Gassen». In 1971, this was the scene of a landslide that claimed the lives of many humans and animals. The chalets and mountain forest are repeatedly destroyed by föhn winds and autumn storms here. The trail leads to the north, past Männlichen rockfalls and under the aerial cableway until it branches off at Parawengi. From here, a steep trail up the mountain slope leads to the Männlichen plateau at 2230 metres above sea level. From the Lauterbrunnen Valley to Lake Thun: The views from the long mountain ridge are impressive and rich in contrast. With the Eiger, Mönch & Jungfrau constantly in sight, on one side views extend down to Grindelwald's wide valley floor, bordered to the east by the rock bastions of the Wetterhorn and Mättenberg. On the other, the views deep down into the

### Ratings:

★★★★☆☆ Panorama

### Organisation:

Jungfraubahnen Management AG  
<https://www.jungfrau.ch/>



Scan QR-Code to save this page offline,  
share with friends and more.  
<https://s.et4.de/RRMTd>





Lauterbrunnen valley are spectacular. In the distance Lake Thun, the Niederhorn and the Schrattenfluh can be seen.

Source: outdooractive.com  
ID: oaTour\_23429698  
Last changed on 02.04.2024, 07:02

**Startpoint:**

Wengen, Wengernalp railway station

**Destinationpoint:**

Männlichen, Bergstation Luftseilbahn Wengen-Männlichen bzw. Grindelwald-Männlichen

**Directions:**

Wengen - In Gassen - Männlichen

**Safety Guidelines:**

Mountain trail with some exposed passages.

**Equipent:**

Englisch: Standard hiking gear, hiking shoes with a grippy sole, walking sticks make the ascent easier.

**Getting There:**

Via Bern or Lucerne to Interlaken. Or from the south, via the Grimsel Pass (summer only) or the Simplon Pass and the Lötschberg car-transport train to Interlaken. Then follow the signs to Lauterbrunnen. Wengen is car-free. The car stays in Lauterbrunnen - the journey to Wengen continues on the Wengernalp Railway.

**Parking:**

Lauterbrunnen multi-storey car park directly at the railway station or the uncovered car park by the church.

**Public Transit:**

Via Bern or Lucerne to Interlaken Ost. Change to the Bernese Oberland Railway to Lauterbrunnen. Change to the Wengernalp Railway to Wengen.

**Additional Information:**

**Hike 46**

(in the printed summer panoramic map of the Jungfrau Railways)

