

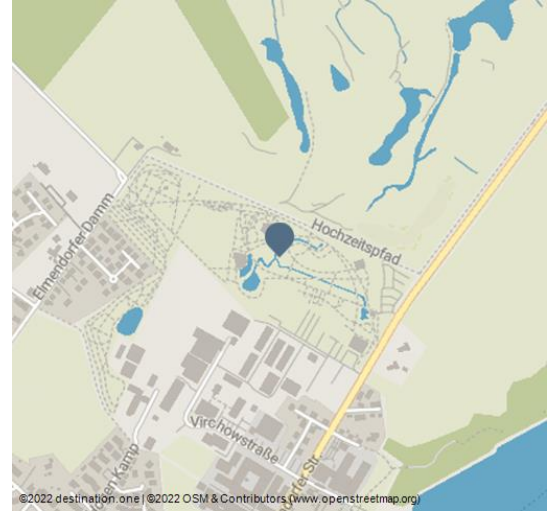


Rhododendronpark im Park der Gärten

Point of Interest



rhododendron-park-lila-rosa - © Ammerland Touristik



The main blooming period in the rhododendron park is generally between mid May and mid June

You can find more than **2,000 species** of rhododendrons, **700 different coniferous trees** and over **400 heather plants** in the rhododendron park within the Park of the Gardens.

In 1977, the training- and experimental station for gardening was transferred from Aurich to Bad Zwischenahn. Many trade visitors as well as admirers give evidence of the great public recognition that this garden receives yearly.

In 1999, the Lower-Saxonian garden culture center was integrated. In times of decreasing product ranges in many tree nurseries, due to economic reasons, the 3.5ha large rhododendron park, and its adjacent arboretum with about 2,000 different rhododendron species, 700 various coniferous species and over 400 heather plants, is important as gene-bank and preservation garden.

Soon many species of the culture will vanish irrevocably. Here, these species are preserved, and presented. The rhododendron breeds are categorised in hybrid groups in relation to their filiation. It is most unique, and has a substantial range of open land rhododendrons on the European continent.

Apart from German breeds, U.S. American, Belgian, English, French, Dutch and Czech species are also existent.

Even Australian breeds, which have long disappeared here, were introduced again.

Address:

Elmendorfer Straße 40
26160 Bad Zwischenahn

☎ 04403 81960

🏠 www.park-der-gaerten.de/

✉ info@park-der-gaerten.de

Author:

Bad Zwischenahner Touristik GmbH
info#@#bad-zwischenahn-touristik.de

Organisation:

Bad Zwischenahner Touristik GmbH
<https://www.bad-zwischenahn-touristik.de/>
info#@#bad-zwischenahn-touristik.de



Scan QR-Code to save this page offline,
share with friends and more.

<https://s.et4.de/jvZ1d>

Source: destination.one

ID: p_100041256

Last changed on 12.08.2022, 12:35

The range of rhododendrons incorporates very old, as well as more modern species, and gives **an overview of the development over the past 180 years.**

Openinghours

Während der Saison vom 13. April bis 6. Oktober 2019 täglich von 9.30 bis 18.30 Uhr geöffnet. Die Ausgänge sind bis 21.45 Uhr geöffnet.



rhododendron-rot-pink - © Ammerland Touristik