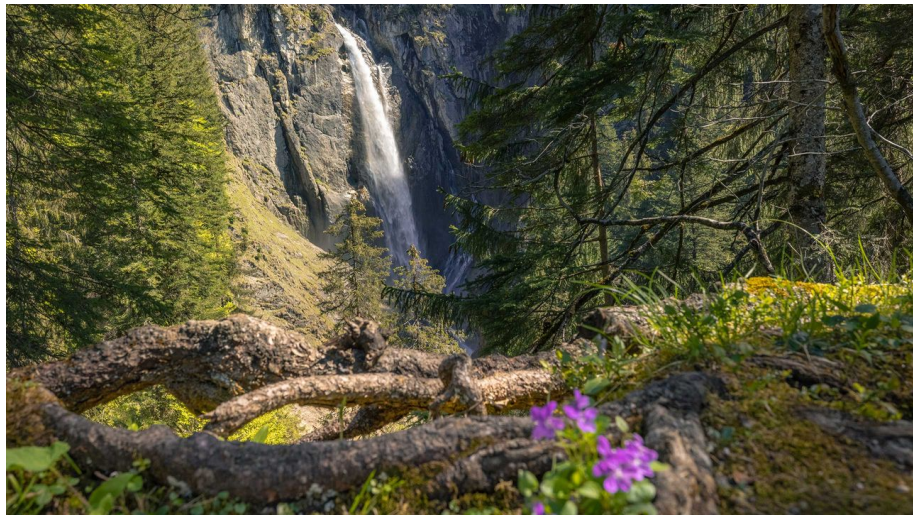


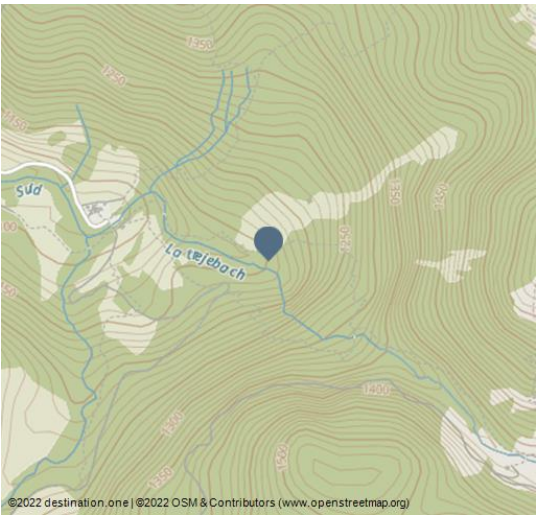


## Pochten Falls

- waterfalls
- nature reserves
- alpine landscapes
- summer



Interlaken Tourismus - web@interlaketourism.ch



### Experience sheer refreshment: Pochten Falls in the Suldtal

**The roaring of the waterfall can be heard even from some distance away. At the extreme end of the Suldtal, the Pochten Falls captivates visitors. The thundering waters of the mountain stream as they tumble 80 m in the void have an invigorating influence and give you renewed energy for the everyday routine.**

On a warm summer's day, an outing to the Pochten Falls is all about sheer refreshment. Follow the circular Pochten Falls route around the impressive rocky funnel in one hour and 10 minutes. The 2 km trail starts from the Pochten Falls restaurant at the end of the Suldtal. This enjoyable path treats you to views of the invigorating Pochten Falls from a variety of perspectives. Take a break for a grill session at the Pochten Falls barbecue point.

### Plan your arrival

The Suldtal is accessible from early May to the end of October. The easiest way to reach it is by taking the Suldtal Bus from Aeschiried to the Pochten Falls restaurant between Juli and the end of October.

### Your highlights at a glance

- 80 m waterfall
- Circular Pochten Falls trail
- Pochten Falls barbecue point

### To ensure that your trip is perfect in every way, please note

- Check the weather conditions in advance
- Bring good footwear as certain spots can be slippery
- Check times of the Suldtal Bus or PostBus in advance

### Features:

### Address:

3703 Aeschi bei Spiez

☎ +41 33 654 14 24

🏠 [www.aeschi-tourismus.ch/](http://www.aeschi-tourismus.ch/)

✉ [info@aeschi-tourismus.ch](mailto:info@aeschi-tourismus.ch)

### Author:

Interlaken Tourismus

[mail@interlaketourism.ch](mailto:mail@interlaketourism.ch)

### Organisation:

Tourismus-Organisation Interlaken (TOI)

[mail@interlaketourism.ch](mailto:mail@interlaketourism.ch)



Scan QR-Code to save this page offline, share with friends and more.

<https://s.et4.de/lrYnf>

Source: destination.one

ID: p\_100042794

Last changed on 14.03.2024, 09:43







**Eligibility**

for Groups, Pet allowed, Suitable for the Elderly, for Children of the age of 6-10,  
for Children of the age of 10 upwards

**Payment Options**

Cash

**Other Furnishing/Equipment**

Toilet

**Accessibility / Arrival**

Parking available

**Openinghours**

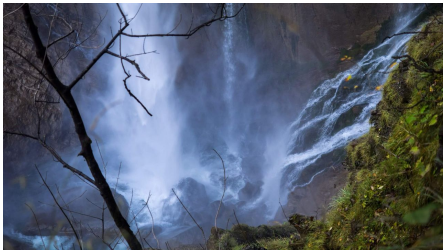
May – October



Interlaken Tourismus - web@interlaketourism.ch



Interlaken Tourismus - web@interlaketourism.ch



Interlaken Tourismus - web@interlaketourism.ch



Interlaken Tourismus - web@interlaketourism.ch

