

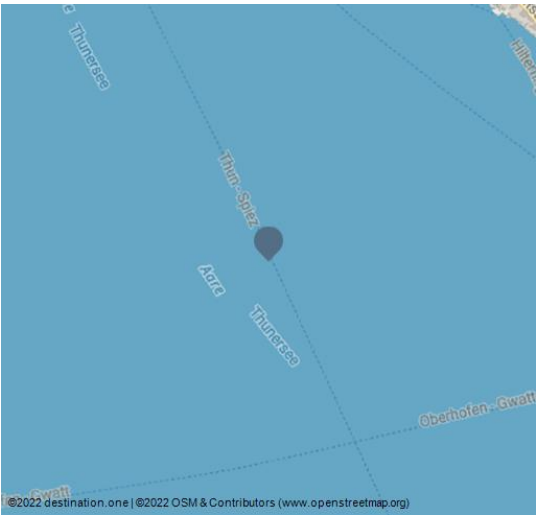


## Winter cruises on Lake Thun

shipping   Disability Access   winter



Tourismus-Organisation Interlaken, Interlaken Tourismus - web@interlaketourism.ch



### Enjoy the wonderful atmosphere and the majestic mountain panorama

In winter there is a daily boat service on Lake Thun between Thun and Interlaken West. Fall under the spell of the imposing landscapes that surround you on your trip on the winter boat. The snow-capped peaks and the sparkling natural surroundings create a fairytale atmosphere. See for yourself and book your unique experience.

Ahoy there and welcome aboard! Deep-blue waters, year-round snow-covered mountain peaks and a cool breeze in your face – when will you enjoy an enchanting winter cruise on Lake Thun? The soothing silence on the water really allows you to unwind, relax and let your mind wander. Discover the lake’s magical atmosphere for yourself and immerse yourself in the sparkling natural landscape. The Lake Thun cruise takes you past picturesque fishing villages and castles steeped in history. Wrapped up warmly in your winter coat and a woollen blanket, admire the passing winter landscapes and the majestic mountain panorama.

Too cold for you outside? Just step into the boat’s heated interior, where there are plenty of window seats. The boat’s galley will satisfy your culinary needs. Why not take the time to discover also the delightful special trips during the cold season? Take an unforgettable trip for two, alone, with your family or with friends. The fairytale winter atmosphere on Lake Thun is guaranteed to put you under its spell.

### Your highlights at a glance

- Relax on the deep-blue waters of Lake Thun
- Snow-crested peaks and wintry natural surroundings
- Atmospheric ambience and the silence on the water
- Culinary highlights in the on-board restaurant
- Unforgettable special and evening trips available
- The superb Lake Thun Brunch is available every Sunday on round trips from Thun to Spiez and back

### Contact Person:

BLS Schiffahrt AG  
Lachenweg 19  
3604 Thun

+41 58 327 48 11  
schiff@bls.ch

### Address:

Seestrasse 9  
3600 Thun  
+41 58 327 48 11  
www.bls-schiff.ch/en  
schiff@bls.ch

### Author:

Interlaken Tourismus  
mail@interlaketourism.ch

### Organisation:

Tourismus-Organisation Interlaken (TOI)  
mail@interlaketourism.ch



Scan QR-Code to save this page offline,  
share with friends and more.

https://s.et4.de/gpgpf





Source: destination.one  
ID: p\_100043703  
Last changed on 29.03.2024, 09:45

- To ensure that your trip is perfect in every way, please note**
- The winter cruises operate from mid-November to the end of March
  - Daily trips between Interlaken West and Thun; consult the timetable
  - Tickets available at the Tourist Office, at the jetties and on board the boats
  - Point-to-point journeys, half-day or full-day excursions available

**Features:**

**General Information**

Bus stop available

**Eligibility**

Suitable for any weather, for Groups, for Class, Pet allowed, Suitable for the Elderly, for Children of all Ages, Suitable for Pushchair

**Payment Options**

American Express, Cash, Debit Card, Mastercard, Visa

**Other Furnishing/Equipment**

Toilet, Baby Change, Handicapped accessible WC, Barrier-free access

**Accessibility / Arrival**

Parking available

**Openinghours**

\_\_\_\_\_ Mid-November - end of March, operation on Lake Brienz is suspended until the beginning of April. (Please note the current timetable on [www.bls-schiff.ch](http://www.bls-schiff.ch))



BLS AG, Schifffahrt, Interlaken Tourismus - [web@interlaketourismus.ch](mailto:web@interlaketourismus.ch)



BLS AG, Schifffahrt, Interlaken Tourismus - [web@interlaketourismus.ch](mailto:web@interlaketourismus.ch)





BLS AG, Schifffahrt, Interlaken Tourismus - [web@interlaketourism.ch](mailto:web@interlaketourism.ch)